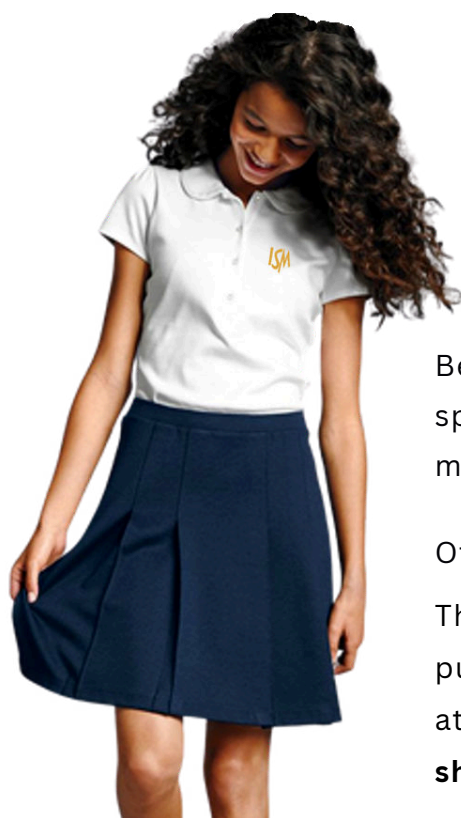


# UNIFORM EXPECTATIONS 2025-2026

in collaboration with

**CHAT-MALO**  
PARIS



Below, you will find the individual Uniform Lists for girls and boys split into 3 categories: Primary, Secondary, and Post-16. All items marked **ISM** must be bought from our supplier Chat-Malo.

Other items may be bought either from our supplier or elsewhere.

The uniform may be purchased either **online** or at the Chat-Malo **uniform shop** in Beausoleil.

## WHAT IS NEW THIS YEAR?

- Tote bag for Year 10 to Year 13 (optional)
- House tags (optional)
- Rain jacket (optional)

## Now MANDATORY:

- The ISM water bottle is now mandatory (no other bottle authorised)
- House T-Shirt is now mandatory

For information on how to buy/order, please see P.9

## ISM Uniform 2025/2026

---

Introduction • P. 1

---

All Students • P. 2  
(Sportswear & Accessories)

---

Primary Years • P. 6

---

Secondary Years • P. 8  
Post-16 Years • P. 8

---

How to Buy • P. 9

---

About Chat-Malo • P. 11

---

# THE ISM SCHOOL UNIFORM

## The International School of Monaco Uniform

The International School of Monaco's uniform is an emblem of the school's identity that gives a sense of belonging and pride whilst ensuring equality amongst students. With subtle adjustments over the years, we are proud to have arrived at a uniform that is designed for our mild climate and is both comfortable and smart. It is **compulsory** that all children from Kindergarten to Year 13 wear the specified ISM uniform without modification.

## Personal Presentation

The uniform plays an important part in supporting the school's values and in establishing a sense of belonging. Each student is expected to be properly attired in full uniform, either school or sport uniform, whilst at school, travelling to and from school, and when representing the school at external functions and events. There will be scheduled non-uniform days on the school calendar and occasions when students are permitted to wear alternative clothing by agreement with their teacher.

Students are expected to take pride in their personal appearance and to be neatly attired and well groomed. Whilst in school uniform, hair must be neat, kept away from the eyes and of a natural colour. If children have their ears pierced, we ask that this be done at the beginning of the summer holidays so as not to restrict them from taking part in games, PE and swimming. Students may wear discreet jewellery. No smart watches or phones are permitted during school hours. We greatly appreciate your support with this.

## Labelling



Please ensure that every item of clothing and equipment, including footwear and sports kit, is clean and clearly named. Name labels with the ISM logo may be purchased through our supplier Chat-Malo (**optional**).



THE INTERNATIONAL  
SCHOOL OF MONACO

## ALL STUDENTS



All items marked **ISM** must be bought from our supplier Chat-Malo. Other items may be bought from our supplier or elsewhere.

### Quick-dry Sportswear

Our collection of sportswear uses advanced fabric technology to produce an unrivalled range of performance clothing. A wide range of technical fabrics are used, including Permanent Wicking Technology designed to be both durable and breathable – ensuring the wearer stays cool and dry.

- **ISM** quick-dry sports polo
- **ISM new** quick-dry sports T-shirt
- **ISM new** winter sports jacket (Secondary only)
- **ISM** sports tracksuit bottoms
- **ISM new** sports leggings
- **ISM** full-zip sports tracksuit top
- **ISM** sports short
- **ISM new** sports skort
- **ISM** swimwear, swim cap (Primary only)(\*See page 6)
- Sports bag **new (optional)**

### School Shoes

Plain black or plain white comfortable, closed-toe school shoes only.

No flashing lights or wheelies. No heels.

### Accessories

- **ISM new** cap (navy blue)
- **ISM** Camelbak Tritan and/or stainless steel water bottle
- **ISM** school backpack
- Scarf, hat (navy blue)
- Hair accessories that compliment the school colours
- Clothing and object labels **(optional)**



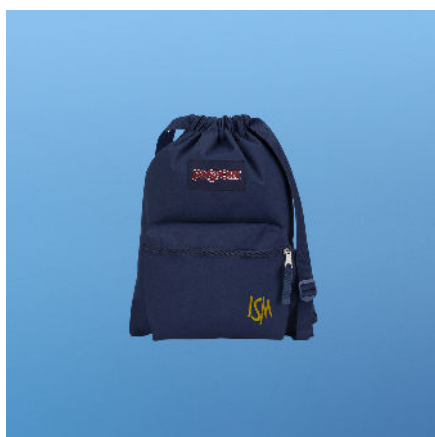


THE INTERNATIONAL  
SCHOOL OF MONACO

## ALL STUDENTS

### JanSport School Backpack - MANDATORY

100% Recycled Polyester 600 Denier



#### Draw Sack (Pre-Primary, Primary, Secondary)

Your on-the-go utility, perfect for Kindergarten children as a light day pack or as a sports bag for Primary and Secondary school children. Get comfy and adjust to your size with adjustable shoulder straps.

**WEIGHT: 0.19 kg**

**CAPACITY: 14 L, 45 x 33.5 cm**

#### Superbreak PLUS (Primary)

The Superbreak PLUS is functional simplicity at its best. It features one large main compartment with iPad/laptop sleeve, a front utility pocket with organizer, haul loop, side water bottle pocket, padded back panel, and iconic straight-cut, padded shoulder straps.

**WEIGHT: 0.4 kg**

**CAPACITY: 26 L, 42 x 32 x 14 cm**



#### Big Student (Primary, Secondary)

The Big Student features a 15in laptop compartment, two large main compartments, a front utility pocket with organiser, a durable mesh side water bottle pocket, ergonomic S-curve shoulder straps, a fully padded back panel, and a zippered front stash pocket.

**WEIGHT: 0.65 kg**

**CAPACITY: 34 L, 43.5 x 32.5 x 19 cm**



THE INTERNATIONAL  
SCHOOL OF MONACO

## ALL STUDENTS

### Accessories - OPTIONAL



#### Lancaster School Bag

Combine elegance with everyday functionality with the lightweight Lancaster zipped Tote Bag sturdy enough to carry school essentials. Crafted from high-quality durable materials, this tote is adorned with a click-on metal ISM logo.

Reserved for students in Year 10 and above.

**WEIGHT: 0.3 kg**

**CAPACITY: (L x H x D): 28 x 25 x 12 cm**

#### Name Tag in House Colours

Keep your bags easily identifiable with the Silicone Bag Tag in House Colours. The tag is both durable and flexible - perfect for withstanding the rigors of travel or school. For safety, only add the first name and year of your child.

**MATERIAL: Silicone**

**CAPACITY: 88 x 55 mm**



#### Foldable Rain Jacket

Waterproof fabric, taped seams and breathable, the waterproof jacket is perfect for class trips or sudden changes in weather at school. This lightweight jacket packs away into its own bag - ideal for convenient carrying.

**Waterproof & breathable Isolite 10000 lightweight 100% polyamide fabric - 80gsm**

## ALL STUDENTS

### CamelBak Water Bottles - MANDATORY



#### Straw Cap or Chute Cap?

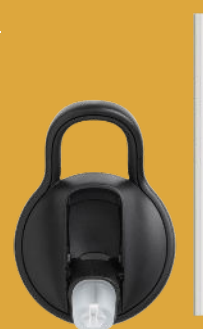
- **Eddy®+ Kids Cap:** No tipping - just flip, bite, and sip. The cap is spill-proof when open, leak-proof when closed. Recommended for ages 3+.
- **Chute® Mag:** Twist, stow, drink - delivers high flow without the mess.

This universal cap features a magnetic top that stows securely out of the way when open and is leak-proof when closed.

*Easy to clean - all parts are top rack dishwasher safe*

*BPA, BPS and BPF free*

#### Eddy®+ Kids Cap:



#### Chute® Mag:



#### Tritan™ or Stainless Steel Water Bottle?

The CamelBak **Tritan™ Renew water bottles** are made with an innovative clear plastic that utilises 50% recycled material in place of fossil-based resources. All of the plastic used is BPA, BPF and BPS free and odour and stain resistant. The bottles are dishwasher safe.

CamelBak's **stainless-steel bottles** are 100% BPA-free, stain resistant and taste-free, with no inside liners or coatings like those found in aluminum bottles. Because the bottles are made with medical-grade stainless steel, they are resistant to dents and blemishes.



Choose your bottle  
and write your name  
in the white space  
provided!





## ALL STUDENTS

### ISM House Sports T-Shirts - MANDATORY

#### House Baret

When starting at ISM, your child will be assigned to a house. Some events will require them to wear their house colours or house T-shirt.

**100% polyester. Quick-drying fabric.  
BSCI certified.**



#### House Earhart

When starting at ISM, your child will be assigned to a house. Some events will require them to wear their house colours or house T-shirt.

**100% polyester. Quick-drying fabric.  
BSCI certified.**



#### House Grimaldi

When starting at ISM, your child will be assigned to a house. Some events will require them to wear their house colours or house T-shirt.

**100% polyester. Quick drying fabric.  
BSCI certified.**



#### House Shackleton

When starting at ISM, your child will be assigned to a house. Some events will require them to wear their house colours or house T-shirt.

**100% polyester. Quick drying fabric.  
BSCI certified.**



Good to know: All siblings in a family will be assigned to the same house.



THE INTERNATIONAL  
SCHOOL OF MONACO

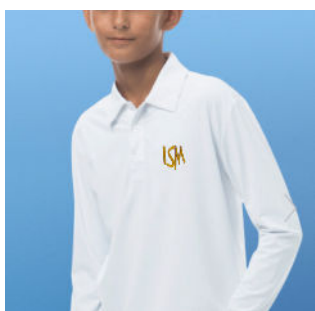
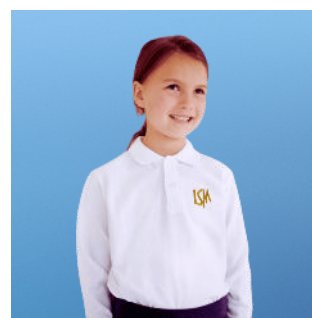
There are distinct uniforms for students in Kindergarten to Year 6, as well as tailored ones appropriate for Secondary students from Year 7 to Year 13.

## PRIMARY YEARS: KPM TO YEAR 6



### Girls Uniform

- **ISM** (white) short/long sleeve girls polo
- **ISM** cotton summer unisex cardigan, V-neck jumper
- **ISM new** winter unisex cardigan, V-neck jumper
- **ISM new** straight-cut unisex jogging trousers
- **ISM** cotton summer dress
- **ISM** pinafore dress
- **ISM** skort, or **new** skirt (integrated shorts)
- **ISM** winter jacket from Aigle
- **ISM** sleeveless jacket from Aigle
- White or navy tights
- White or navy socks



### Boys Uniform

- **ISM** (white) short/long sleeve unisex polo
- **ISM** cotton summer unisex cardigan, V-neck jumper
- **ISM new** winter unisex cardigan, V-neck jumper
- **ISM** boys chino shorts, trousers
- **ISM new** straight-cut unisex jogging trousers
- **ISM** winter jacket from Aigle
- **ISM** sleeveless jacket from Aigle
- White or navy socks







THE INTERNATIONAL  
SCHOOL OF MONACO

## \*ISM Swimwear for Primary Years

**Delfina** is a European team sports swimwear & performance apparel company that is owned and run by a dynamic team of aquatic professionals who have all competed internationally and who know quality swimwear inside out. The team brings the highest professional standards with quality, design and performance as the hallmarks of the company.

### Xback Swimsuit

- Thick straps & conservative cut
- Ideal for training / racing
- Secure & comfortable
- Shape retention
- Polyester/PBT & material technology

**Delfina**



SF 821  
005CB9 001F60 DEA83D

## \*ISM Swimwear for Primary Years (Year 2 and Year 3)



1F 2N  
#DEA83D

### Swimming team briefs

- Ideal for training / racing
- Secure & comfortable
- Shape retention
- Polyester/PBT & material technology



right left  
Blue 005CB9 Yellow 001F60 Dark Blue 001F60

### Swimming cap

- Made from superior quality latex
- Easy to put on & slip off, does not pull hair
- Soft texture with excellent stretch, pliability & durability



THE INTERNATIONAL  
SCHOOL OF MONACO

## SECONDARY YEARS: YEAR 7 TO 11



### Girls and Boys Uniform

- **ISM** (white) long/short sleeve unisex polo
- **ISM** cotton summer unisex cardigan, V-neck jumper
- **ISM new** winter unisex cardigan, V-neck jumper
- **ISM new** girls trousers
- **ISM** boys chino trousers
- **ISM** boys chino shorts (navy)
- **ISM new** skirt (integrated shorts)
- **ISM** winter jacket (navy)
- White or navy tights
- White or navy socks



## POST-16 YEARS: YEAR 12 & YEAR 13



Casual business attire is introduced in the Post-16 Years (Years 12 and 13).

### Girls and Boys Uniform

- White shirt (**optional**, available at Chat-Malo)
- **ISM** (white) long/short sleeve unisex polo
- **ISM** cotton summer unisex cardigan, V-neck jumper
- **ISM new** winter unisex cardigan, V-neck jumper
- **ISM new** girls trousers
- **ISM** boys chino trousers (navy)
- **ISM** boys chino shorts (navy)
- **ISM new** skirt (integrated shorts)
- **ISM** navy blue blazer with ISM pin
- White or navy tights
- White or navy socks



## HOW TO BUY THE UNIFORM

### Chat-Malo Uniform Shop

At the Chat-Malo Uniform Shop, you can bring your children to try on the different sizes of the ISM uniform and directly purchase what you need.

**"L'École Chat-Malo" Uniform Shop**  
**21 Blvd du General Leclerc**  
**06240 Beausoleil**

The shop is a 5-minute walk from **behind Nike/St. Charles church in Monaco**, with the Saint Charles Parking, followed by the Belle Époque parking a few meters away. Please ring the doorbell to enter. A new street-facing door has been approved and will be installed in the next 6 months.

### Sizes

All sizes of the current uniform are available in the shop. New additions to the uniform will be added as soon as they become available and are published online.

### Book an appointment in July and August

The website portal will have a booking service available over the summer months so parents can reserve slots to try on and directly purchase the uniform.

### Opening Hours

#### Regular Opening Hours

Monday - Friday

10:00 - 12:30 and 14:00 - 17:30

\*There will be longer and ongoing opening hours in the week before the start of school.

#### Shop holidays or changed opening hours

Holidays or any changes in the opening hours are posted on "Chat-Malo Boutique Beausoleil" on Google Maps, which is updated regularly. Please note that train strikes may affect opening hours.

## How to Order Online

- 1) Visit the website **www.chat-malo.com**, choose "Nos uniformes scolaires" from the main menu and scroll down "Connexion des Ecoles" to choose your school.
- 2) Select "**ISM Monaco**"
- 3) Login using the case-sensitive password:  
**@ISMParents**
- 4) All that's left to do is to add your items to the basket and confirm your order!

## Customer Service

Please send all uniform inquiries to: **ismuniform@chat-malo.com**  
Correspondence is available in English/French/German/Italian.

# CHAT-MALO

P A R I S

## About Chat-Malo

Founded in Paris in 2016, Chat-Malo is built on its authentic values and a feeling of belonging. It stands for a committed, timeless and comfortable brand that grows not only with its children, but also in its commitment to the environment and the world its children grow up in.

## The International School of Monaco Uniform

The school uniform plays an important part in supporting the school's values and in establishing a sense of belonging. It reinforces an identity that the International School of Monaco has gradually developed throughout its history. The school uniform has been developed under the guidance of the Board of Trustees with the aim of carrying forward an existing identity and improving the quality of the uniform to complement the mild climate of the South of France.

## Fabrics and Labels

We believe that the quality of the fabric is fundamental for the well-being and comfort of our children, and we work with high-grade materials ranging from quick-dry technical sportswear, to organic cotton (where possible), to soft-flowing mixed fabrics. The garments produced by Chat-Malo are fitted with soft cotton clothing labels, giving your children the freedom to move and run around in comfort.

## A brand that cares

As mothers ourselves, we are passionate about adding elements from our own personal experiences, and we pay particular attention to detail when designing the various elements of the uniform. Environmental and social awareness is key to how we operate, meaning that we continually try to improve our carbon footprint, and we consciously choose the companies we work with. The majority of our factories are small, family-run businesses around Europe, allowing us to develop a personal relationship with our producers and to work towards providing maximum quality.

